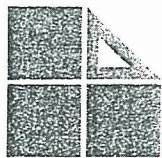
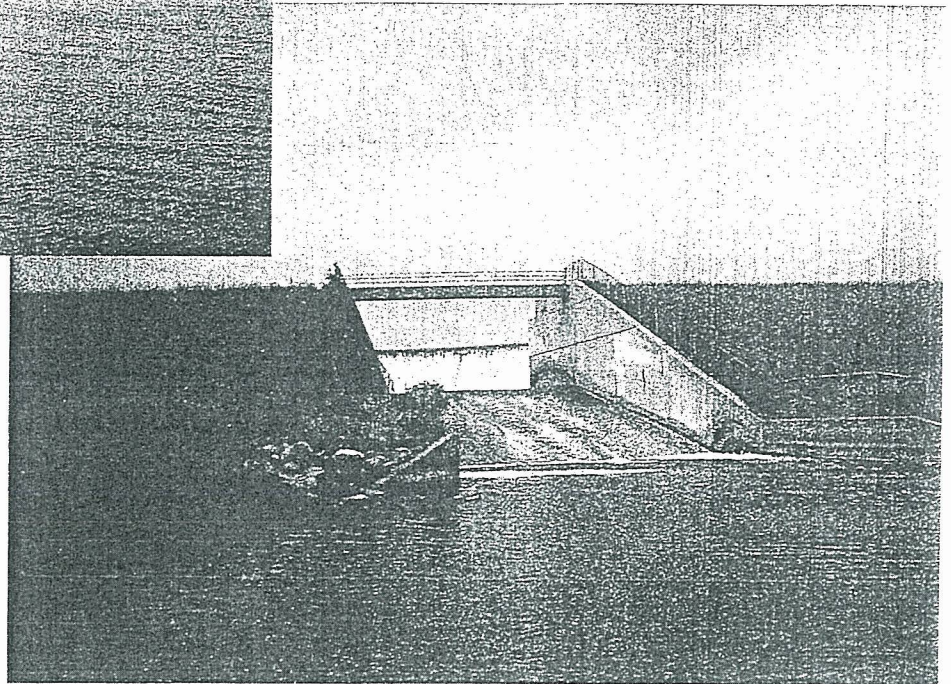
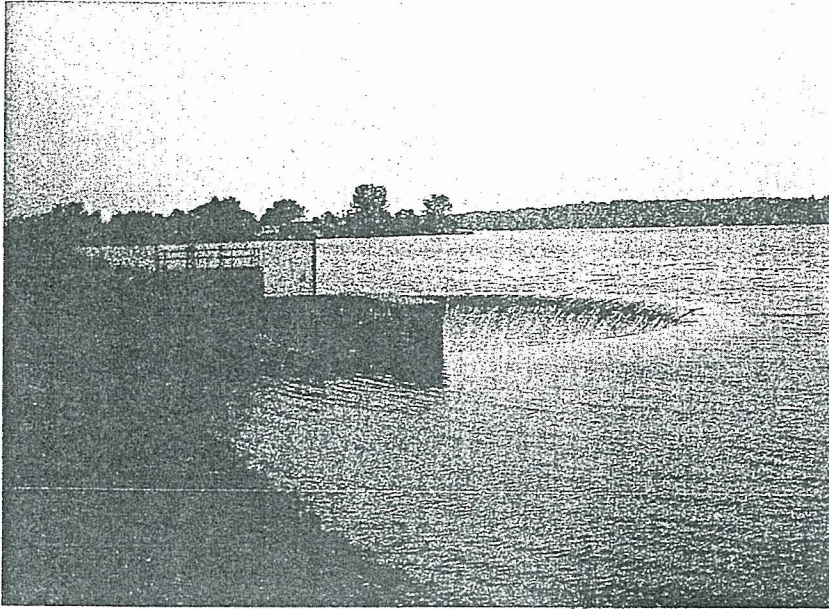


LAKE ISABELLA DAM SAFETY INSPECTION REPORT

Dam ID#: 00434 - High Hazard Potential
Section 35, T.15N, R6W
Sherman Township
Isabella County

Project E070246

November 6, 2007



LAPHAM
ASSOCIATES

ENGINEERING
PLANNING
ENVIRONMENTAL
SURVEYING

515 E FIFTH ST
P O B O X 33
CLARE MI 48617
P 989 386 7774
F 989 386 7152

115 S ARCADE ST
GLADWIN MI 48624
P 989 426 4881
F 989 426 0422

210 COURT ST SUITE A
MT PLEASANT MI 48858
P 989 772 2865
F 989 772 3528

NORSTAR CENTER
116 S THIRD ST
WEST BRANCH MI 48661
P 989 345 5010
F 989 345 7302